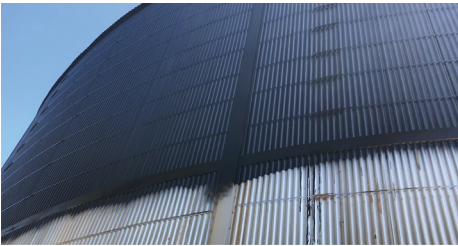




specialty coating products



SteelSkin 100/200 (2261)

- Exterior DTM Application
- Excellent adhesion to aluminum
- Excellent Sprayability
- Tintable
- Cost Effective



Bulk Solvents

Economies of scale pricing on . . .

- Isopropyl Alcohol
- Mineral Spirits
- Toluene
- Xylene
- Acetone



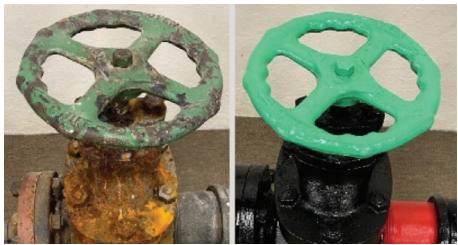
WhiteCAPS ClearCAPS

- Waterbased White Acrylic roof paint
- Stain and Algae resistant
- Ultra-high reflectivity
- Bleed-through prevention
- Improved granule adhesion
- Suitable for new or repair projects



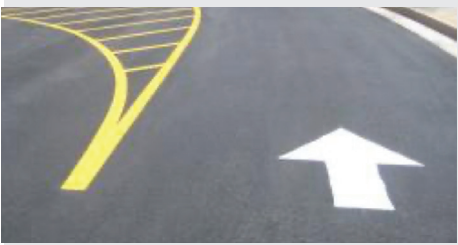
BlackShield

- Ultra-Low Voc Asphalt Sealer
- Jet black finish
- Safe for residential application
- Hybrid formulation
- Long term UV, chemical & surface-wear protection
- Tintable to any colour



RTB100

- Water Based Rust Converter
- Low VOC
- Excellent Corrosion resistance
- Easy application
- Breakthrough technology
- Great value



MAC Track Line Marking

- Low VOC formula
- Quick dry formula
- Superior hiding
- Competitive price
- Wide temp application range
- Airless or air assist application



Product guide



Solvent & Water-Based Industrial Coatings

Define | Design | Develop | Deliver



SWT Group Inc.
1591 Kildare Road, Windsor, ON, CANADA N8W 2W2
Tel: 519-967-0020 Fax: 519-967-1220
swtgroup.com ISO 9001

industrial equipment & building coatings

MAC Coatings has been providing a broad portfolio of tailor-made coating solutions to the machinery, equipment, construction and automotive industries across North America for over 60 years. The team at MAC Coatings is available to assist you in solving corrosion, durability and coating appearance challenges in an efficient and cost-effective manner. Providing custom solutions is our passion.

MAC AquaShield

Uniquely formulated, general purpose, water-based coating for use on steel, concrete and wood.

AquaMAC

Direct-to-metal water-based metal rack coating. Quick-dry properties with superior hardness, gloss and corrosion resistance. Approved at various OEM's.

MAC Air Dry

General-purpose air-dry alkyd topcoat for brush/roll application on metal. Guards a wide variety of surfaces against rust and damage.



MAC Quick Dry

General-purpose quick-dry alkyd topcoat for spray application on metal. Guards a wide variety of surfaces against damage and corrosion.

MAC Track

Water-based line-marking paint for concrete and asphalt surfaces. Can be tinted to any colour.

MAC Epoxy

Extremely durable, chemical-resistant floor coating for concrete surfaces.

MAC Rack

Direct-to-metal alkyd specifically formulated for metal racking. Quick-dry solvent-based formula supports fast-paced production. Approved at various OEMs.

MAC industrial coatings are extensively used in various OEM and aftermarket applications with decades of market history.



Define | Design | Develop | Deliver